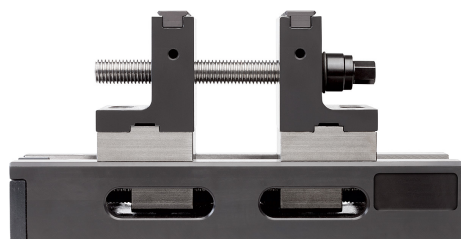
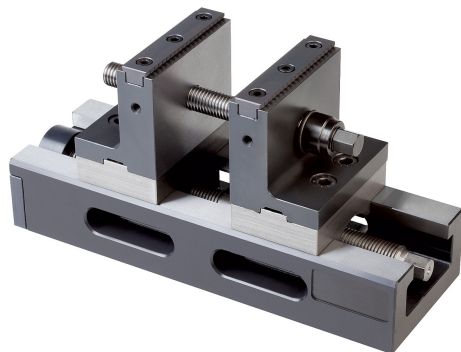
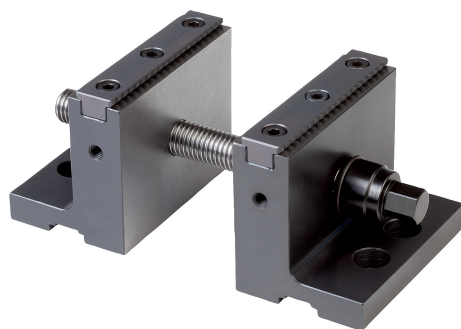


Step jaw attachment for 5-axis machining

Item description/product images



Description

Material, version:

Step jaw steel, hardened, clamping surfaces ground.

Grip rail steel, hardened

Note:

The workpiece is first centred using the lower centring spindle, then finally clamped using the upper clamping spindle.

Basic set:

Supplied with a pair of high add-on step jaws with 2 gripper inserts and 3 clamping spindles in various lengths.

1. length 80 mm clamping range up to 35 mm.
2. length 140 mm clamping range up to 95 mm.
3. length 200 mm clamping range up to 155 mm.

Advantages:

Ideal for five-side machining.

High mounting on the machine table of 5-axis milling machines.

Clamping force is generated directly underneath the workpiece.

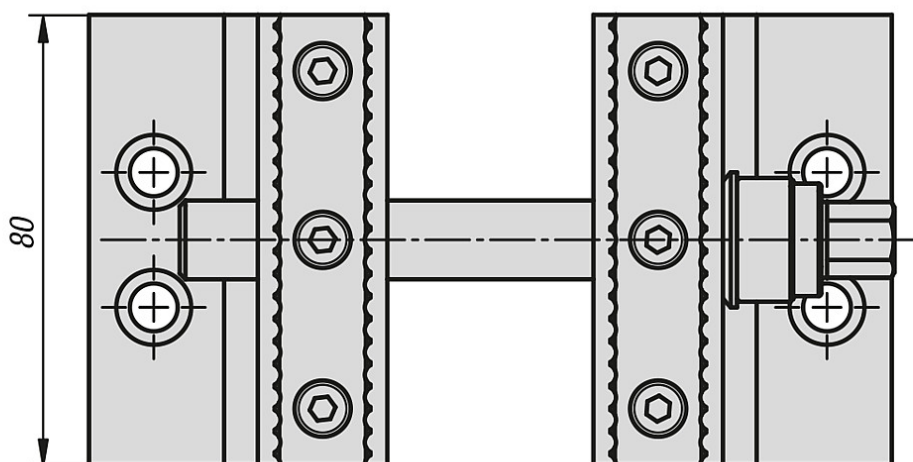
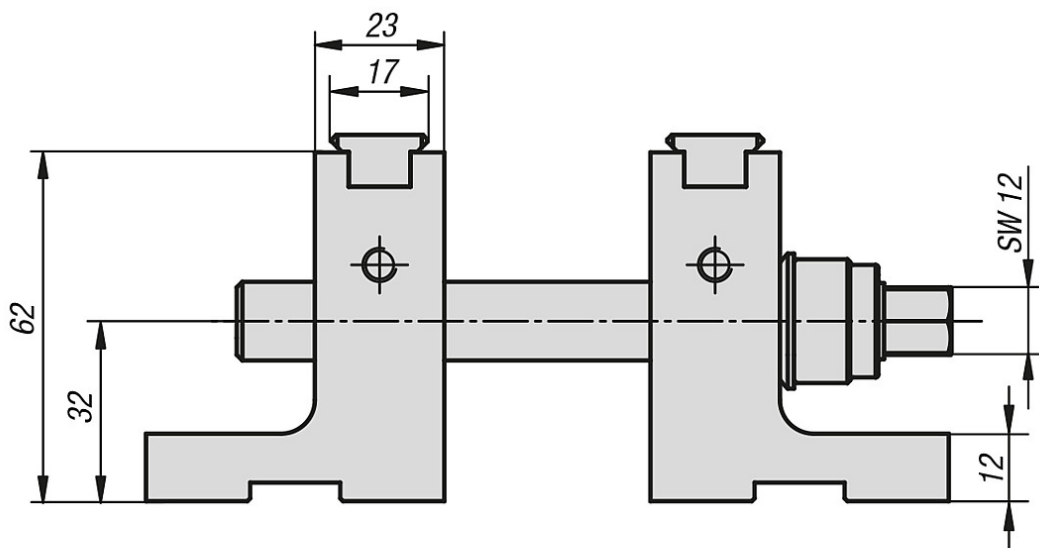
Mechanical clamping over 2 spindles.

Additional clamping force through additional clamping spindles.

The top jaws can be retrofitted for K0586.080200.

Step jaw attachment for 5-axis machining

Drawings

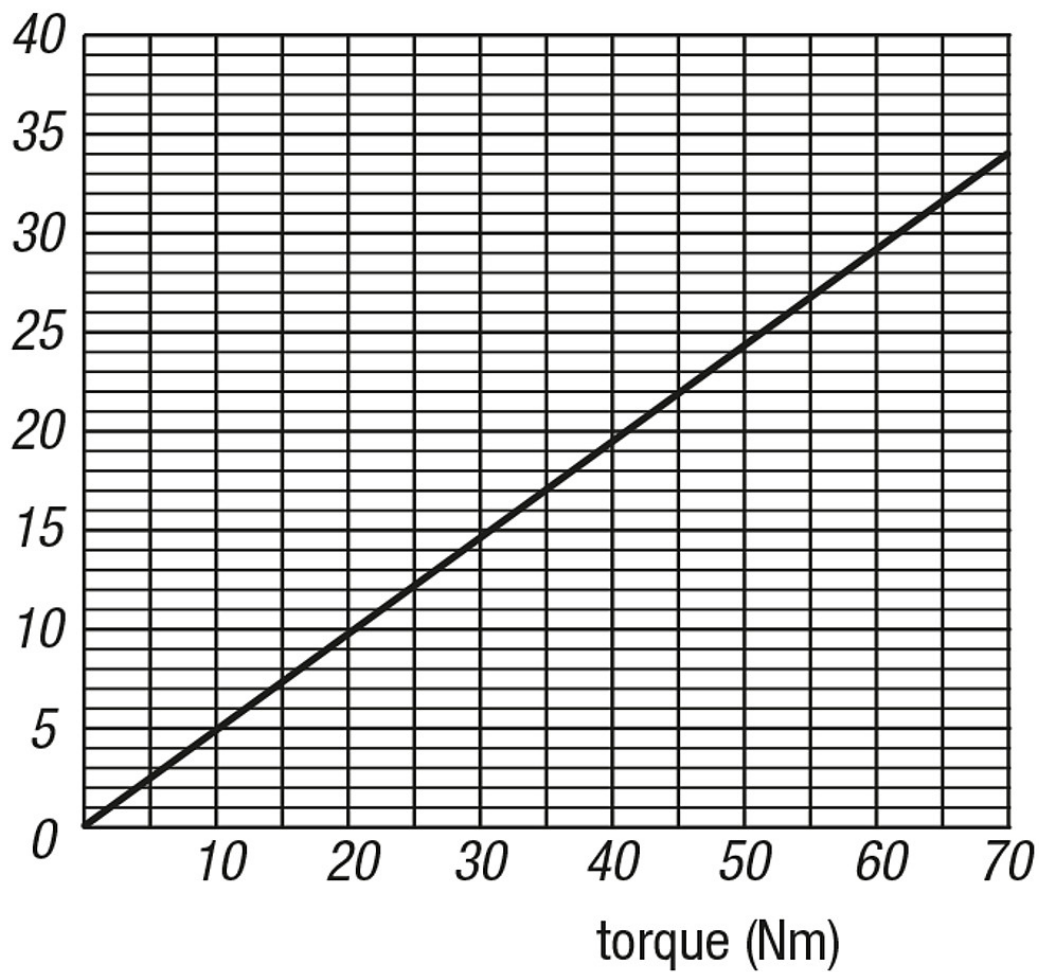


Step jaw attachment for 5-axis machining

Drawings

clamping force diagram

clamping force (kN)



Overview of items

Step jaw attachment for 5-axis machining

Order No.	Article description
K1115.0801	ATTACHMENT STEP JAW FOR 5-AXIS MACHINING